

## Bed & Breakfasts

### The Ashlyn House



310 W. Broadway  
Brunswick, MO 65236  
660-548-3237

### Sycamore Valley Farm



25589 Fort Orleans Avenue  
Brunswick, MO 65236  
660-548-3283  
[sycamorevalleyfarm.com](http://sycamorevalleyfarm.com)

KC Catfishing Tournament  
3rd Weekend in July

Annual Pecan Festival  
1st Saturday Full Weekend in October

## PAST TO PRESENT

After the Louisiana Purchase of 1803, the areas on the Missouri River had an influx of settlers from Kentucky, Virginia, and the Carolinas. Many were attracted to the rich farmlands surrounding present day Brunswick. This area, seated at the point where the Missouri and Grand Rivers merge, became an official campsite of the Lewis and Clark Corps of Discovery in 1804. Today, a modern marina provides easy access to the Grand River. A marker at the marina also commemorates the Trail of Death of 1833 traversed by the Potawatomi Tribe.

In 1836 Methodist minister James Keyte united the community of settlers when he founded the town of Brunswick, Missouri. An English immigrant, Keyte named the town after Brunswick, England. Just a few years prior, Keyte had also founded Keytesville, the county seat of Chariton County and Brunswick's neighbor. Today a marker stands as a reminder of James Keyte's actions in the Douglas Masonic Cemetery, located at the top of the hill on Adams Street. The Keyte family residence, built in 1838, operates today as the Florence Hotel.

Brunswick retains its prosperous farming tradition, providing the community with pecan farms and seasonal produce markets. The community attracts visitors year round, with its camping and fishing opportunities, yearly pecan festival, and bed and breakfasts.

Check us out on the web at:  
[brunswickmo.com](http://brunswickmo.com)



24

## Missouri's Pecan Capital



# BRUNSWICK



Come see the world's largest pecan! Built in 1982, the concrete pecan clocks in at 12 feet long, with a 7 foot diameter, and weighs a whopping 12,000 lbs. Modeled after the Starking Hardy Giant pecan, developed by George James and patented in 1947, the pecan stands today in downtown Brunswick as a reminder of the community's past and present.

### Chariton County Heritage Tours, Inc.

Janet Weaver, President  
P.O. Box 40, Keytesville, MO 65261  
Call: 660-288-3425  
Email: [janet\\_weaver531@hotmail.com](mailto:janet_weaver531@hotmail.com)  
Online: [www.keytesvillemo.com/chariton-county-heritage-tours.html](http://www.keytesvillemo.com/chariton-county-heritage-tours.html)

### King Hill Farm



King Hill Farms is a family-owned farm and business, selling native pecans for almost four decades. Pecans are available year round, along with seasonal produce and Mid-Missouri food items.

22842 Highway 24 • 660-548-3972  
[www.kinghillpecans.com](http://www.kinghillpecans.com)

### Plantation Antiques & Interiors



Located in downtown Brunswick, Plantation Antiques offers local products as well as one-of-a-kind home décor and accessories.

117 E. Broadway • 660-548-3955  
[www.plantation-antiques.com](http://www.plantation-antiques.com)

### Brunswick Mini-Park



Sit a while at the mini-park in downtown Brunswick. Updated by the Brunswick Redevelopment and Revitalization Committee, the park offers a quiet respite.

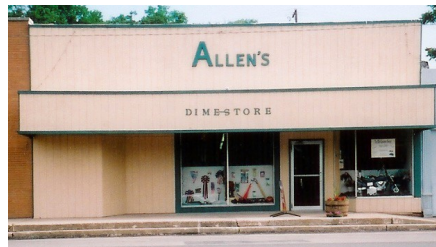
### AgriServices of Brunswick, LLC



Brunswick AgriServices, located near both the railroad and river, processes, stores, and ships tons of agricultural products out of north-central Missouri yearly. Call ahead for tours.

Highway 24 West • 1-800-279-4229  
[www.agriservices.com](http://www.agriservices.com)

### Allen's Dimestore



Allen's Dimestore is a charming variety store located in downtown Brunswick. Here one can find supplies, gifts, knick-knacks, souvenirs, and handmade crafts.

205 E. Broadway • 660-548-3042  
[www.mcmsys.com/~allensdimestore](http://www.mcmsys.com/~allensdimestore)

### Kinkhorst Brunswick Distributing



Brunswick Distributing has been part of the community since 1868. Today along with distribution, the facility offers a gift shop and group tours (please call ahead).

1065 E. Broadway • 660-548-3173  
[www.abwholesaler.com/group02/brunswickdistco/home](http://www.abwholesaler.com/group02/brunswickdistco/home)

### Kaitlynn's Deli and Ice Cream Shop



Kaitlynn's offers good food in a family-friendly atmosphere. Known for their cheesecake, the restaurant also has a soda fountain and full service deli.

121 E. Broadway • 660-548-3600  
[www.kaitlynns.com](http://www.kaitlynns.com)

### Sew Sweet Quilt Shop



Sew Sweet Quilt Shop has it all, with a fabric store spread out over two stories, quilting services, sewing classes, and retreats.

207 E. Broadway • 660-548-3056  
[www.sewsweetquiltstore.com](http://www.sewsweetquiltstore.com)

### Twin Oaks Enterprises



Twin Oaks is full of beautiful items to furnish your home. Specializing in rustic and primitive décor, Twin Oaks also has a floral department and custom builds furniture to meet your needs.

206 W. Broadway • 660-548-1400  
[www.twinoaksenterprises.com](http://www.twinoaksenterprises.com)